

nordicBrainEx

Installation Instruction

Please carefully read the following sections on software installation and license instructions.

nordicBrainEx has been developed by NordicNeuroLab. All folders on your PC related to the nordicBrainEx software are named NordicNeuroLab.

If you need assistance with the installation of the nordicBrainEx software, or if you have any questions, please contact your local representative or ProductSolutions@NordicNeuroLab.com.

Contents

Software Installation Instructions.....	2
First time installation	2
Reinstalling or upgrading from version 2.3.6 or later	4
Upgrading from versions between (and including) 2.2.1 to 2.3.5	4
Upgrading from version 2.2.0 and earlier	8
Supplementary information.....	12
DICOM transfer	12
Window display scaling.....	12
License Instructions	12
General information about the licensing system.....	12
USB key based licenses	12
USB network key based licenses.....	12
Update of USB license.....	13

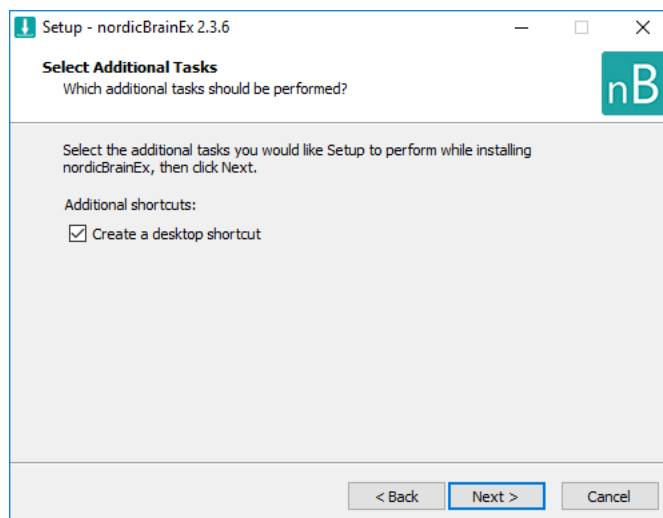
Software Installation Instructions

Note: If you have nordicICE software v2.3.14 or earlier installed on your computer, and answer NO to the question of keeping the existing DICOM Database during the nordicBrainEx installation, you will also remove the nordicICE database.

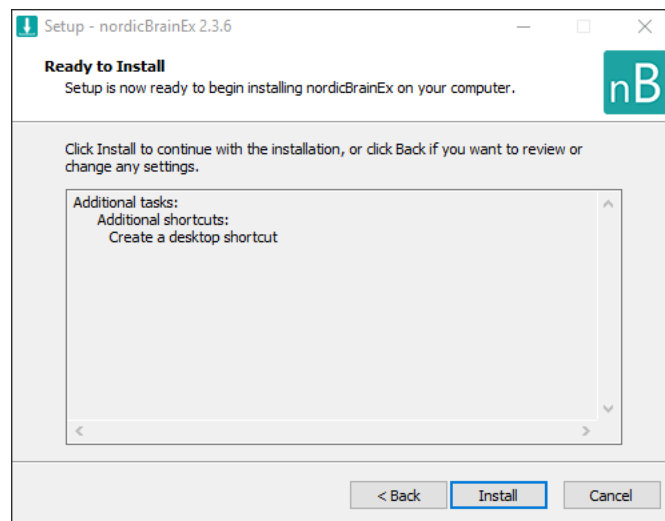
First time installation

Prior to installing the software, it is recommended that any antivirus or security program active on the PC should be configured to exclude the following directory from scans: C:\Program Files (x86)\Common Files\Aladdin Shared\HASP.

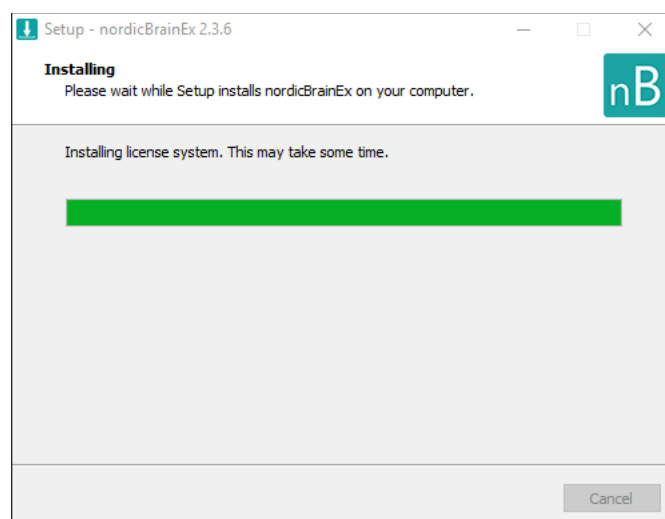
1. Start the installation by double-clicking the installer-package (nordicBrainEx_v2.3.X.exe), which you can find on the USB which was included with the shipment.
2. Once you have chosen to accept the terms of the license agreement, click *I accept the agreement....* And then click *Next*.
3. You will be given the option to create a desktop shortcut. Tick the checkbox if a shortcut should be created. Click *Next*.



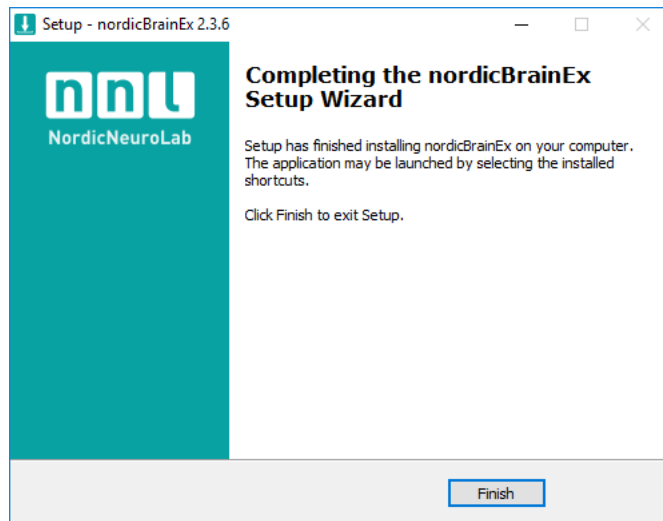
4. To start the installation, click *Install*.



5. Wait for the installation to finish. Note that once the progress bar reaches its end, installation of the license system starts. This may take up to a few minutes (without any indication on the progress bar).



6. Once the installation is done, click *Finish*.



Reinstalling or upgrading from version 2.3.6 or later

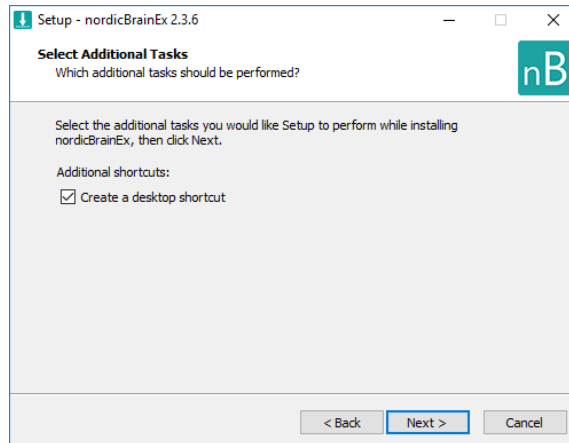
To reinstall or upgrade from nordicBrainEx v2.3.6 or later, follow the same procedure as for a first-time installation. Note that reinstalling or upgrading from v2.3.6 or later will not delete the existing database.

Upgrading from versions between (and including) 2.2.1 to 2.3.5

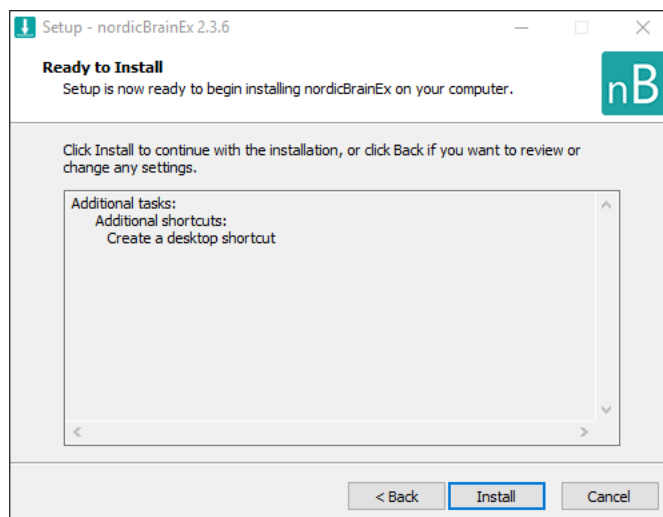
Prior to installing the software, it is recommended that any antivirus or security program active on the PC should be configured to exclude the following directory from scans: C:\Program Files (x86)\Common Files\Aladdin Shared\HASP.

1. Start the installation by double-clicking the installer-package (nordicBrainEx_v2.3.X.exe), which you can find on the USB which was included with the shipment.
2. Once you have chosen to accept the terms of the license agreement, click *I accept the agreement....* And then click *Next*.

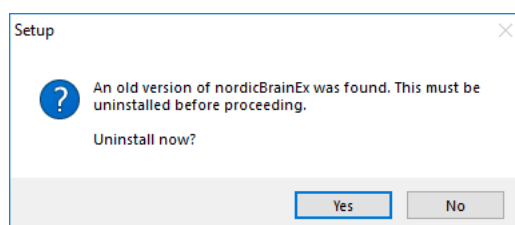
3. You will be given the option to create a desktop shortcut. Tick the checkbox if a shortcut should be created. Click *Next*.



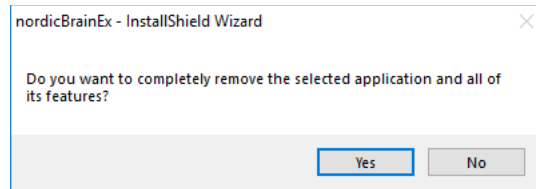
4. To start the installation, click *Install*.



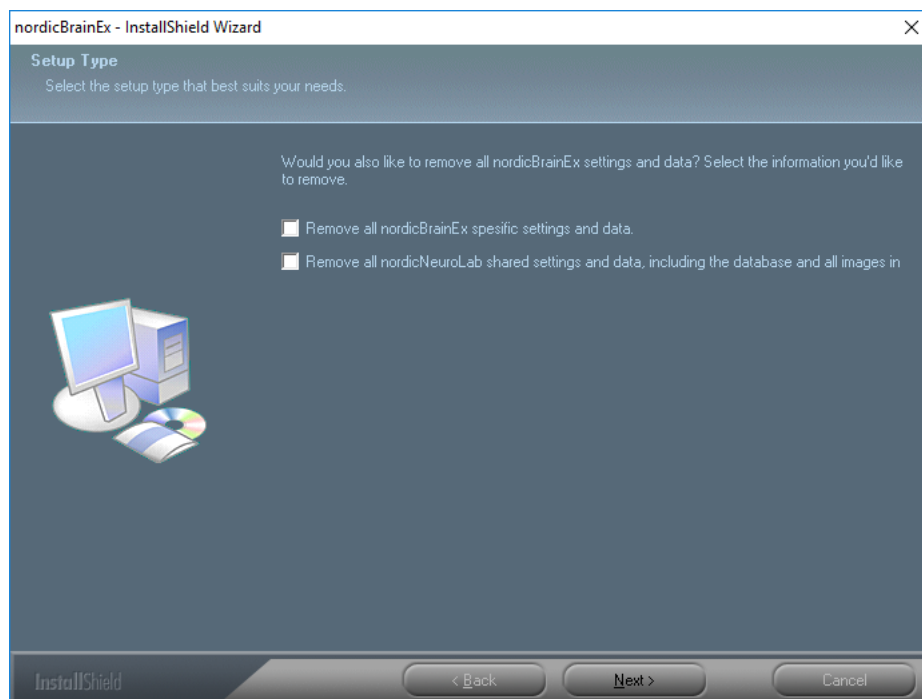
5. Since there is an older version of nordicBrainEx installed, you will be asked if this should be removed or not. Click *Yes* to uninstall the old version and install the new.



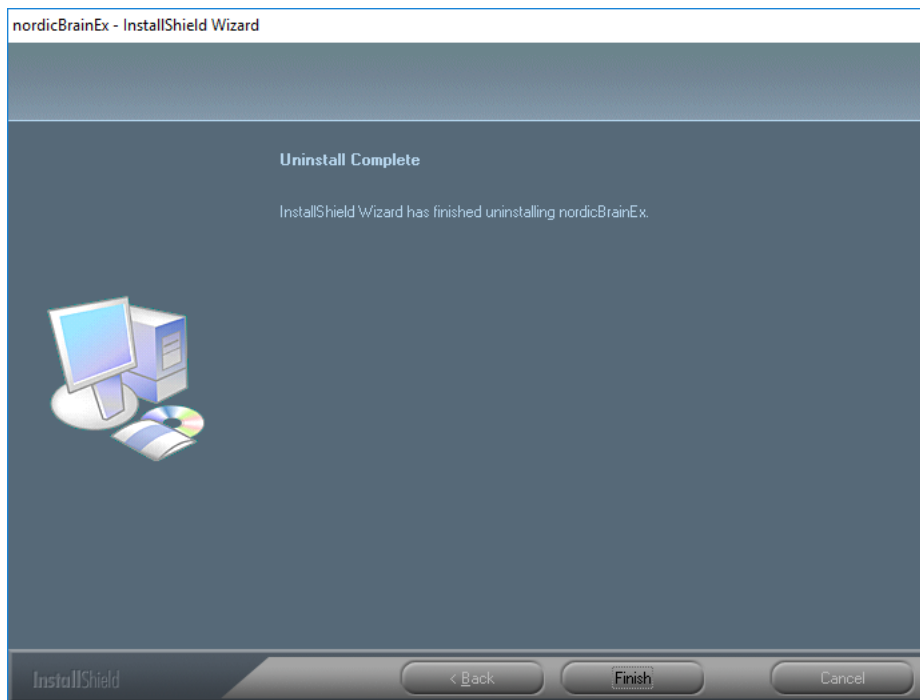
- The uninstaller for the old version will now be executed and you will be given the option to completely remove the old version. Click *Yes* to continue uninstalling.



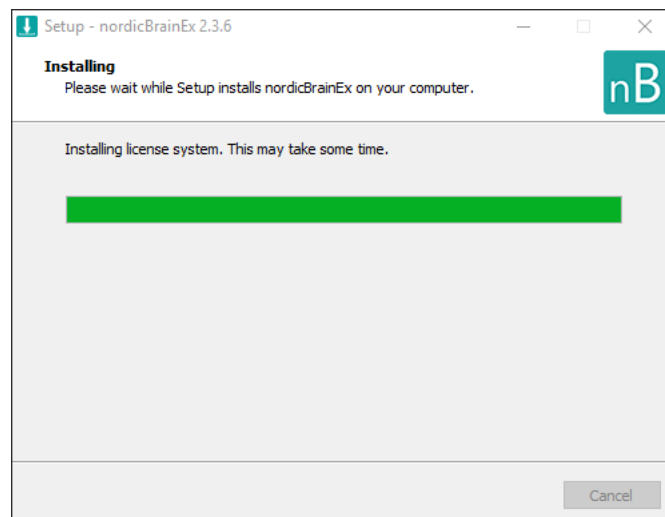
- You will now be given the options to remove the stored settings of nordicBrainEx and to remove shared settings, as well as the database. If you want to keep the settings and the database, leave both checkboxes unticked and click *Next*.



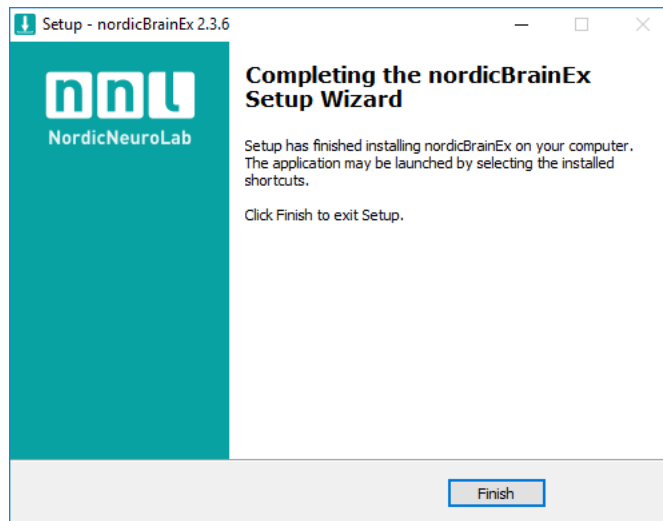
8. Click *Finish* once the uninstallation of the old version is done.



9. The installation of the new version of nordicBrainEx will now continue. Wait for the installation to finish. Note that once the progress bar reaches its end, installation of the license system starts. This may take up to a few minutes (without any indication on the progress bar).



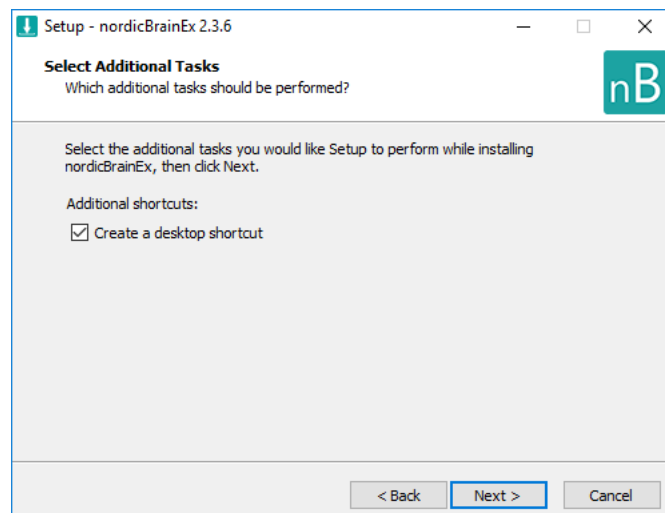
10. Once the installation is done, click *Finish*.



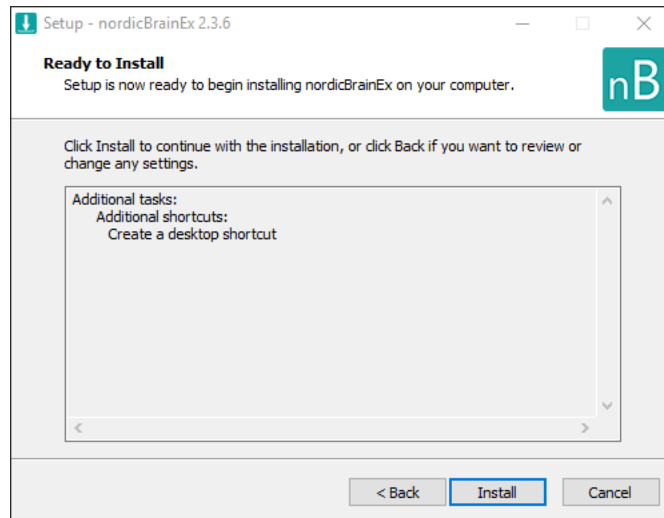
Upgrading from version 2.2.0 and earlier

Prior to installing the software, it is recommended that any antivirus or security program active on the PC should be configured to exclude the following directory from scans: C:\Program Files (x86)\Common Files\Aladdin Shared\HASP.

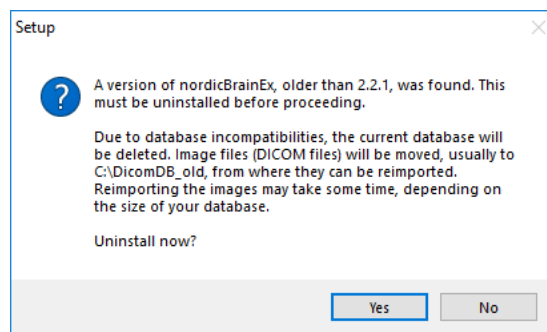
1. Start the installation by double-clicking the installer-package (nordicBrainEx_v2.3.X.exe), which you can find on the USB which was included with the shipment.
2. Once you have chosen to accept the terms of the license agreement, click *I accept the agreement....* And then click *Next*.
3. You will be given the option to create a desktop shortcut. Tick the checkbox if a shortcut should be created. Click *Next*.



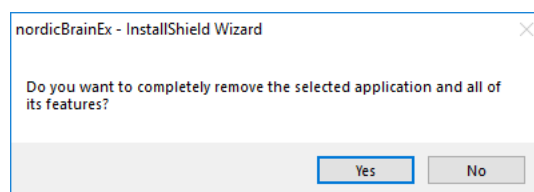
- To start the installation, click *Install*.



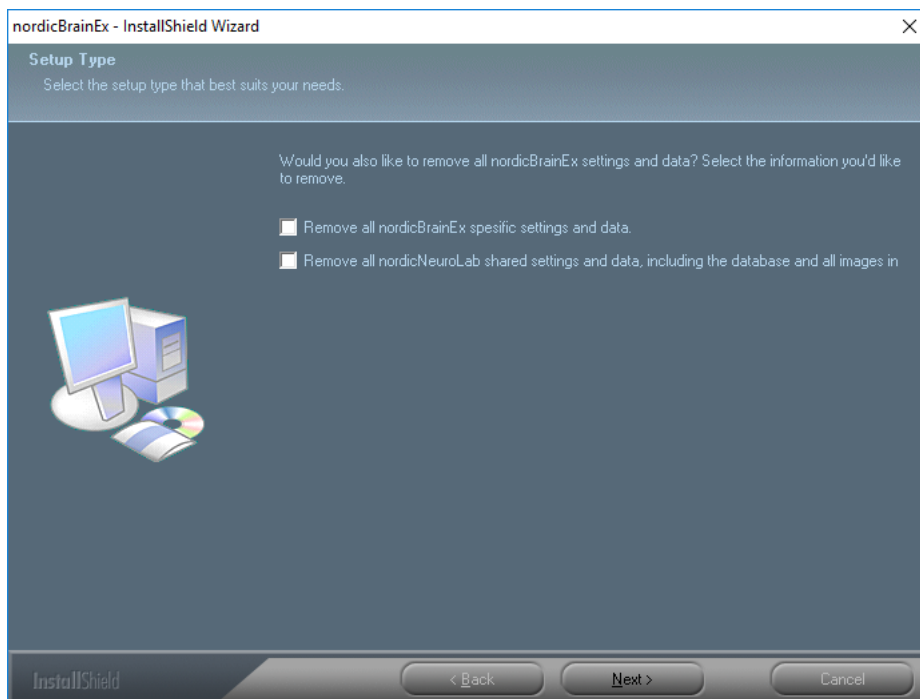
- Version 2.2.0 of nordicBrainEx and versions prior to this have database structures that are incompatible with the newer versions of nordicBrainEx. Therefore, to continue the installation, the existing database must be cleared. However, all DICOM files are retained in a folder that was specified at an earlier point in time (default this is C:\DicomDB_old). To restore the database in the newly installed version of nordicBrainEx, this must be re-imported. Note that such a reloading may be a time-consuming operation. If you want to continue uninstalling the old version and installing the new, click *Yes*.



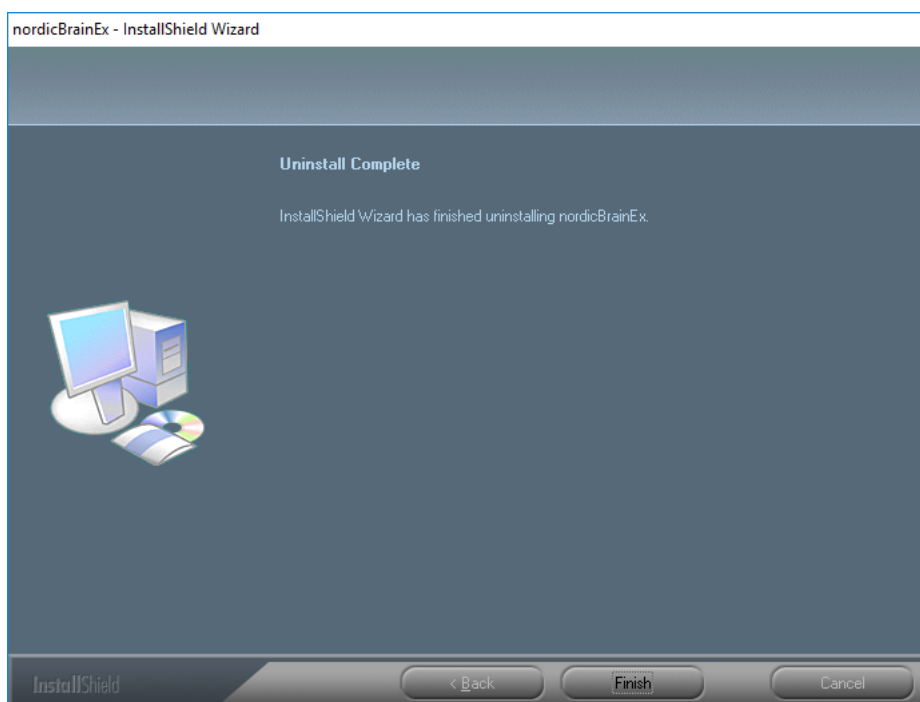
- Next, the uninstaller for the old version of nordicBrainEx will start and ask if you want to remove it and all its components. Click *Yes* to continue.



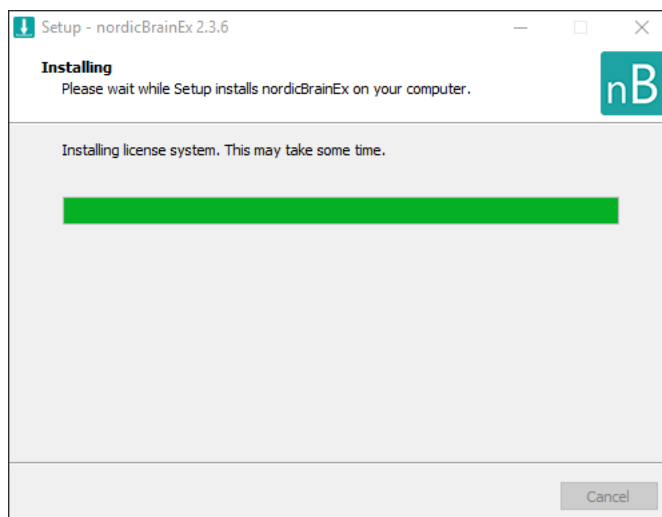
7. You will now be given the options to remove the stored settings of nordicBrainEx and to remove shared settings, as well as the database. Keep both checkboxes unchecked and click *Next* to continue (the database will at a later stage be cleared, independent of the choices made here).



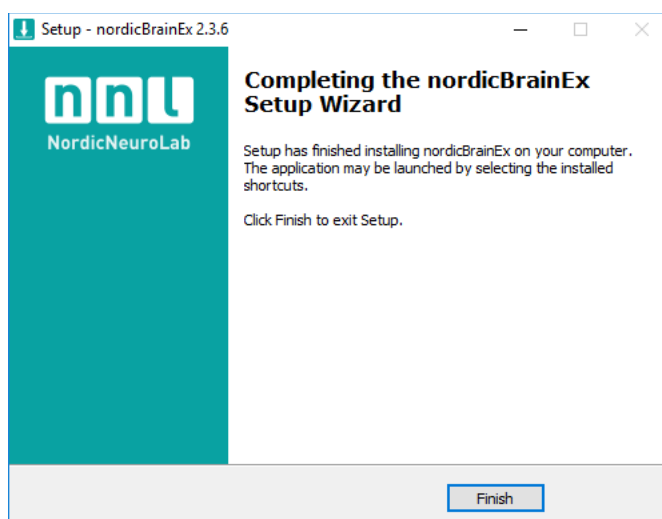
8. Click *Finish* once the uninstallation of the old version is done.



9. The installation of the new version of nordicBrainEx will now continue. Wait for the installation to finish. Note that once the progress bar reaches its end, installation of the license system starts. This may take up to a few minutes (without any indication on the progress bar).



10. Once the installation is done, click *Finish*.



Supplementary information

DICOM transfer

For DICOM transfer to nordicBrainEx, the default port number used by nordicBrainEx is 104. See the nordicBrainEx tutorial 'Handling Image Data' (available from within the application) for additional information on how to set up remote DICOM entities in nordicBrainEx.

Window display scaling

When using nordicBrainEx, the display scaling in windows (found in Display settings) should be set to 100% for the screen where nordicBrainEx is shown.

License Instructions

General information about the licensing system

In nordicBrainEx version 2.0 and above, there is a modularized license system. It has been introduced so that the main functionalities, i.e. BOLD, DTI, DSC and DCE analyses, are licensed separately. There is a separate license for the basic module which is included with any or all of the modules. Any type of DICOM dataset supported by nordicBrainEx, including the functional types, can be loaded, but a corresponding license is required to start an analysis. All standard visualization and measurement tools, such as volumes of interest and distance measurement tools as well as all database and network functionalities, are available with a license for the basic module.

The license(s) you have bought can be activated through two different mechanisms, either the activation is provided on a USB stick or it is provided using a software key (specific regions only).

For the USB license, please follow the instructions below. For software key license, please see instructions included in the key delivery email.

USB key based licenses

In order to install and activate a USB key based license, you need a physical USB HASP key from NNL. Once you have received this key, you simply plug it into a spare USB-port on the nordicBrainEx PC to start using the nordicBrainEx license(s). Note that the first time you insert the USB into the PC, it might take a couple of minutes before the USB becomes active as it needs to perform an automatic installation of the necessary drivers. Once it is ready, the USB key will display a red light.

The USB key will work on any computer you have installed the nordicBrainEx software on, meaning that if you have installed it on multiple PCs you can share the USB key between these PCs.

USB network key based licenses

The USB network key offers the ability for the USB key to be plugged into router, server or local PC. It will then provide the license to one or more, concurrent users and/or PCs via the network. The USB

network key must be visible on the network, to all associating PCs running nordicBrainEx. Your local IT engineer will be able to assist in setting up the required network visibility.

Update of USB license

The only step necessary to do an update of a USB license is to report the USB key number, which can be found on the label attached to the USB, give it to ProductSolutions@NordicNeuroLab.com, and a .v2c-file will be returned to you. Instructions on how to update the license be sent with the v2c-file.